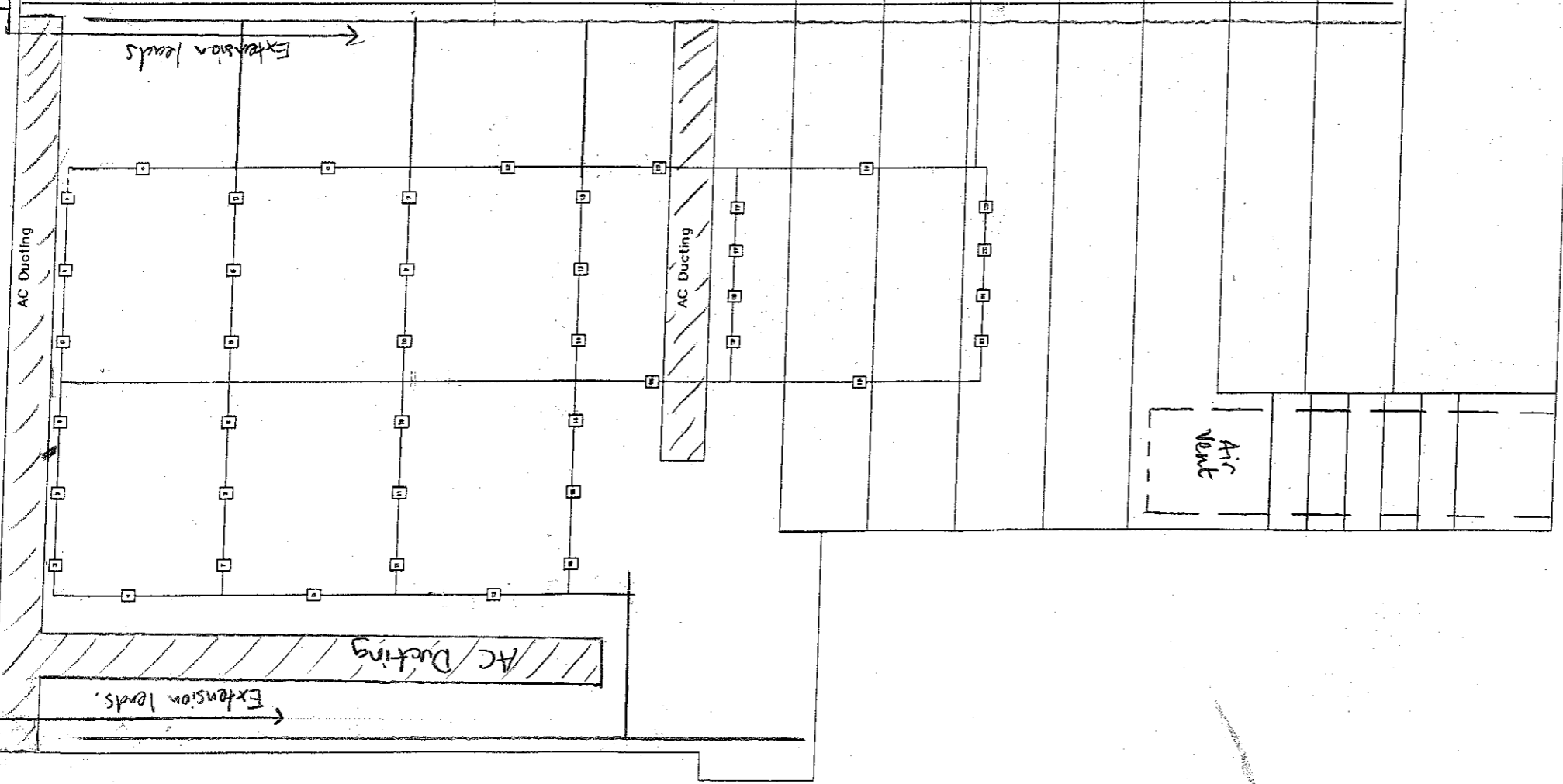


24 23 12
□□□

22 23 14
□□□



Plans By: Lighting Electrics	Date of plans: January 2004
Disclaimer: All measurements were taken in January 2004 and were correct at the time. Lighting Electrics can not be responsible for any changes made after this date which are not on the plan.	
Notes: There are 3 dips behind the back wall of the stage, through the doors. They're not numbered but run from 22 - 24. (Paired) Along the stage left wall is a scaffold bar that runs the full length of the stage and auditorium, just below roof height. This can be used to hang lanterns on or to place booms on. There are 12 sockets on this bar. There are two twin 1.5A sockets on all sides of the stage. 300mm above floor level.	